



Attendance Newsletter

Autumn Term 2023

School Matters!

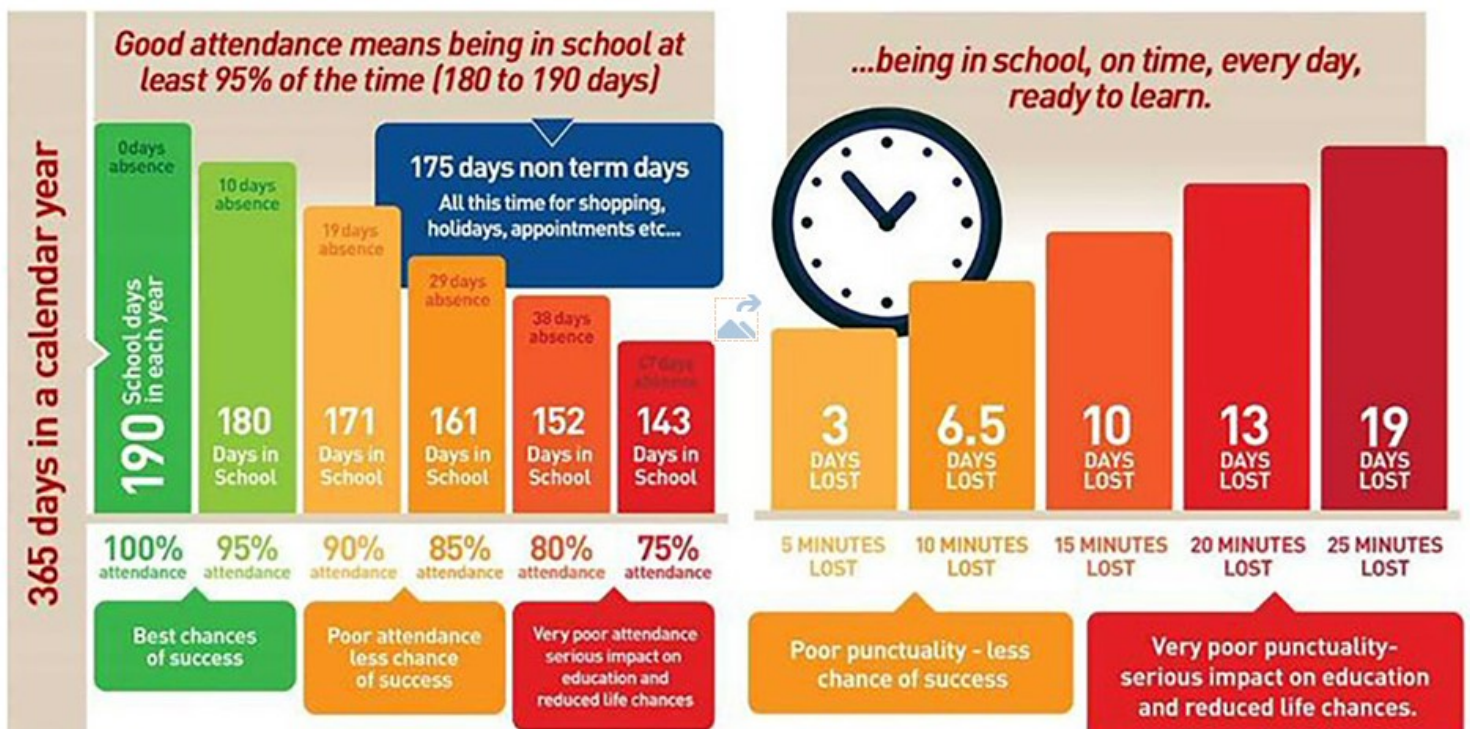


Year Group	% Attendance This Term
EYFS	94.8
Year 1	95.6
Year 2	94.8
Infants Total	95.1
Year 3	93.4
Year 4	96.2
Year 5	96.2
Year 6	96.1
Juniors Total	95.5

The Three Trees Academies is continuing to focus on attendance and punctuality. We have attached our current attendance data for you to see.

We hope that we can continue to work together to help your children **Aspire, Belong** and **Achieve** at **The Three Trees Academies**.

A big thank you to those families who have been working hard to ensure their children's punctuality and attendance continues to be a priority.



DID YOU KNOW? A two week holiday in term time means that the highest attendance you can achieve is **94.7%**

DID YOU KNOW? If you are 15 minutes late each day you will have missed a full 2 weeks of school in one year?

Holidays

Holidays during term time can only be approved in 'exceptional circumstances'. You may be fined up to £120 per parent, per child if you go away during term time. School is closed for a total of 14 weeks each year and the government asks parents/carers to take holidays during this time so that children progress at school as well as possible.

If you need to apply for time off during term time, please complete a 'Leave of Absence' form to enable the school to consider your request. These are available on our school website or you can request from reception.

Please note that Derbyshire County Council's code of conduct states that the Local Authority (LA) will not issue more than two penalty notices within a 12-month period, consequently a third request will automatically result in consideration of a straight to court prosecution.

Where a pupil is repeatedly absent without permission the LA have the right to consider a straight to court prosecution instead of issuing a penalty notice. In these cases, the LA will warn a parent in writing that this is a possible consequence of taking a further period of unauthorised leave.

Medical Appointments

Where possible we ask that **medical/dental appointments** are to be booked after school or during school holidays to ensure your child's learning is not interrupted. We understand this cannot always be the case, so please inform us of any appointments arranged

BE THE BEST!

Arriving at school on time and good attendance are central to raising standards of pupil attainment and ensuring that your child reaches their full potential.

For all the children to gain the greatest benefit from their education it is vital that they attend regularly and be at school on time every day the school is open, unless the reason is unavoidable. Any absence affects the pattern of a child's schooling and regular absence will seriously affect their learning.

School Start/Finish Times

Infant School - 8:45am - 3:15pm

Junior School - 8:50am - 3:20pm

Doors open 5 minutes prior to start time.

